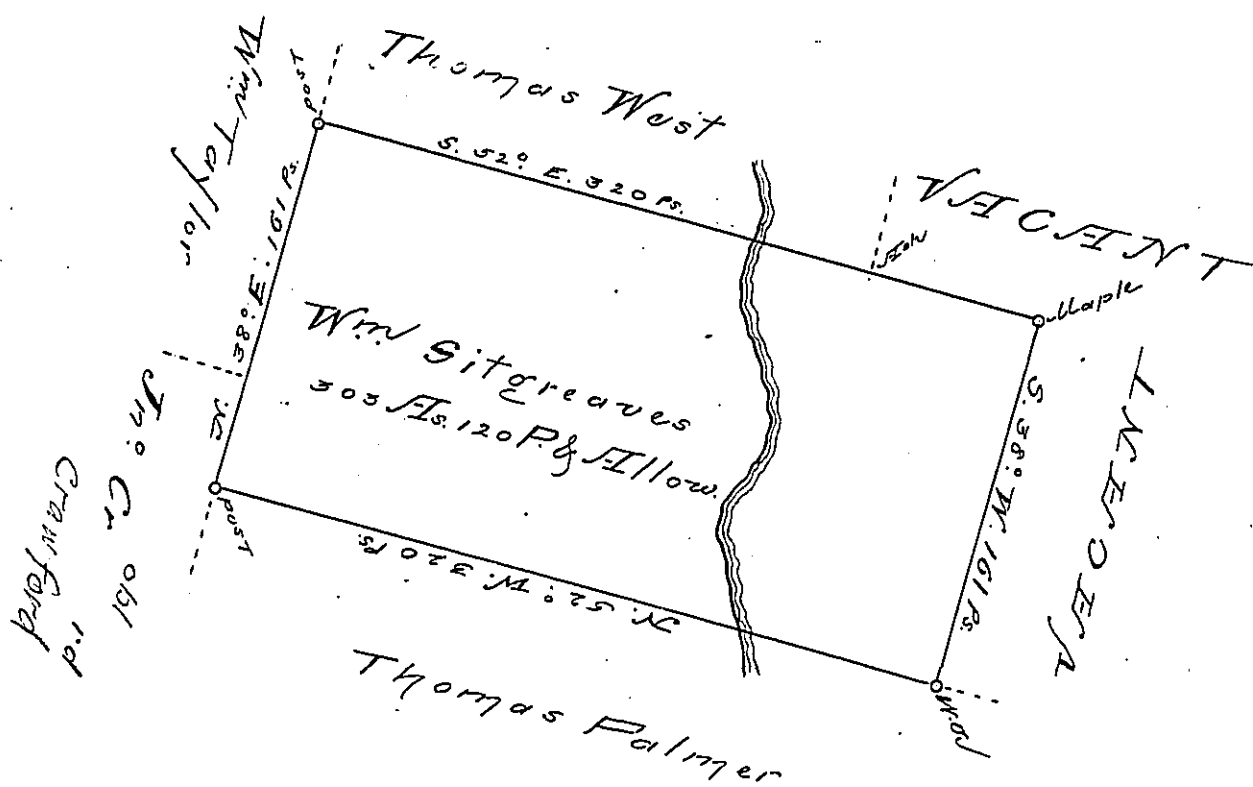


X



A Draught of a Tract of Land called
 Beaver Dam Situate on a Run of Water supposed
 to empty into Fishing Creek in the Forks of Susquehanna
 Adjoining Thomas West's Land & others
 including a White Oak marked L. 1 in Northumberland
 County containing three hundred and three Acres
 and one hundred and ^{twenty} ~~thirty~~ Perches besides the
 usual allowance of 6 P. Cent for Roads

Surveyed the 26th Day of Octob^r 1772 for
 William Sitgreaves In Pursuance of his Warrant
 dated the 7th Day of September 1772

To

John Lukens Esq^r by Chas^r Stewart
 Surveyor Genl Dep^y Sur^r

IN TESTIMONY that the above is a copy of the original remaining on file in the
 Department of Internal Affairs of Pennsylvania, made con-
 formably to an Act of Assembly approved the 16th day of
 February, 1833, I have hereunto set my Hand and caused
 the Seal of said Department to be affixed at Harrisburg, this

— twentieth day of February — 1895.

Isaac B. Brown
 Secretary of Internal Affairs.